

# DOCKSTAR

## Air-Powered Dock Leveler

**LOAD USAGE**  
Upto 26,000 lb  
(11,800 kg)

**LOAD CLASS**  
Workhorse  
Heavy Super



Designed for demanding applications.  
Delivering maximum efficiency and performance.



**A**  
 Clean Frame Design  
 Allows for easy pit cleaning  
 and reduces trapped debris.

**B**  
 One Piece Dock Strut  
 Updated design increases stability,  
 reduces engagement time, and  
 lessens the likelihood of improper  
 positioning.

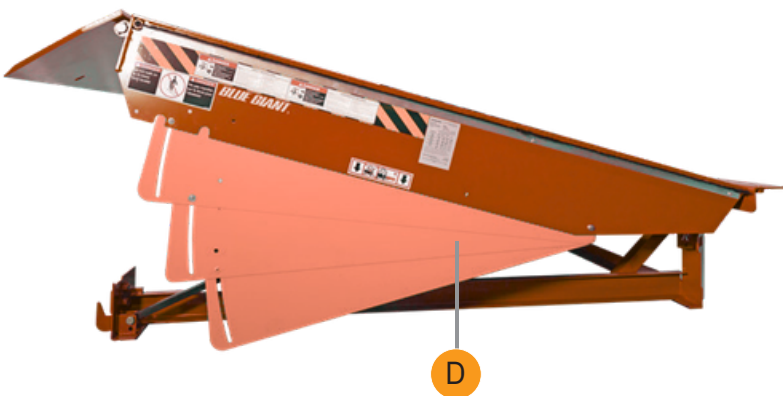
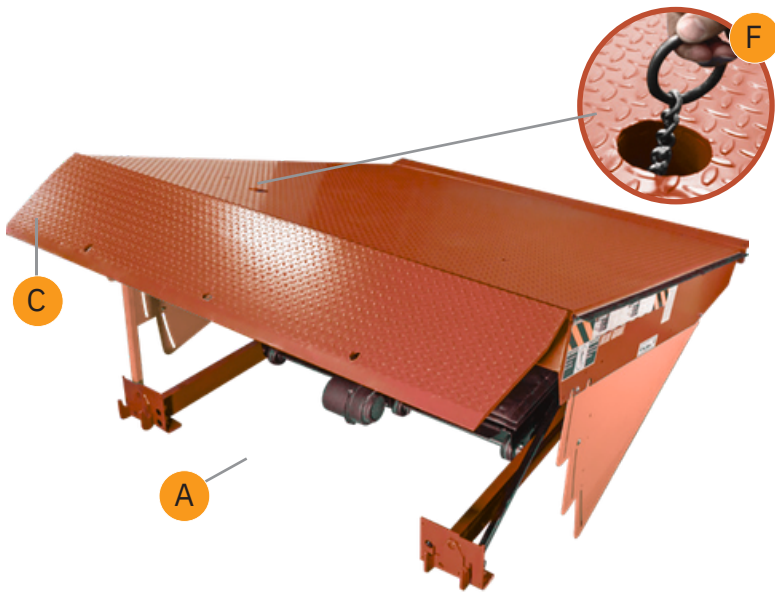
**C**  
 Lip deployment system  
 Lip deployment system provides  
 positive powered deployment  
 and automatic release.

**D**  
 Full Operating Range Toe  
 Guards  
 Reduce the risk of foot-related  
 injuries at the loading dock.

**E**  
 Blower Motor  
 Activates the leveler by  
 delivering air on demand.

**F**  
 Robust Pull Chain  
 Allows the retraction of fall-safe  
 legs for below level loading,  
 and reduces stump out.

**G**  
 Mechanical Fall Safe Legs  
 Reduces fall distance in the  
 event of premature truck  
 departure.



# OVERVIEW + FEATURES

## EASY TO OPERATE

- Engineered with a focus on usability, the Blue Giant Air-Powered Dock Leveler
  - Leveler is simple to activate and requires just one button operation control.
  - Deck raises in a smooth, controlled fashion, deploying the lip with continuous upward motion.
  - Blower motor inflates a two-stage air bag via high-volume, low-pressure (HVLP).
  - After releasing the button, the bag deflates, setting the platform on the trailer bed.
- No manual lifting is required.  
Requires 120V single phase power source.

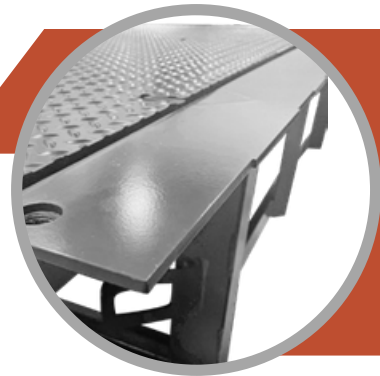


## THE POWER OF AIR

- The air bag can operate in extreme temperature conditions and withstand pressure without overinflating.
- PVC-coated polyester fibers make the bag resistant to chemical or puncture damage.
- The high-volume, low-pressure (HVLP) air lifting system is an environmentally friendly alternative to oil-powered hydraulics.
- Air-Powered performance is activated by a single push button control station, requires no bending or pulling on the part of the operator.
- Equipped with a NEMA4X control station (moisture and corrosion resistant), the Air-Powered Dock Leveler is an ideal solution for special-use facilities, such as clean room facilities and an alternative to hydraulic levelers.

## STRUCTURAL INTEGRITY

- 8-10 enhanced J-beam channels are welded to the underside of the deck at dynamic impact points to prevent distortion and extend the lifetime of the dock leveler.
- All dock options, including 6', 6'-6", and 7', are designed to accommodate both four-wheel and three-wheel forklifts as standard.
- Notched headboard and base frame provide increased stability for service equipment, such as the dock strut and service stand.
- A redesigned lip deployment system provides positive powered deployment and automatic release when lowering on trailer bed or storing in parked position.



## DESIGNED WITH SAFETY IN MIND

- Onepiece dock strut settles firmly into vertical position, supporting both deck and lip for safe remote under-deck maintenance and pit maintenance.
- In the unlikely event of premature truck departure, mechanical fall-safe legs prevent platform free-fall, minimizing the risk of worker injury and equipment damage.
- Two stage mechanical fall-safe legs eliminate front curb angle damage, preventing costly concrete repairs.
- Stationary side toe guards with high-visibility OSHA safety striping and full operating range metal toe guards reduce the risk of foot-related injuries at the loading dock. Optional anti-slip powder coat reduces the likelihood of slipping on the deck in wet conditions.
- DLB, traffic light system, and truck restraint options can be combined with our Air-Powered Dock Leveler for a fully integrated loading dock safety system.

## DECK FLEX ADVANTAGE

- Ideal for normal loading conditions, the fixed rear hinge design allows the deck to flex up to 4" (102 mm) when under load to ensure full-width contact between the lip and the truck bed.
- The deck remains flush with the floor to eliminate pinch points and cross traffic obstruction.
- High tensile J-beams allow the deck to easily flex side to side while maintaining back to front rigidity without distorting over time.

## INNOVATION AND QUALITY


- A North American industry-first, the Blue Giant Air-Powered Dock Leveler features a powder coat finish as standard, providing unrivaled longevity to finish and color.
- State-of-the-art robotic welding increases structural integrity.
- Plasma cut parts ensure uniform quality.
- Powder coat provides corrosion resistance and increased durability. Environmentally-friendly process uses no solvents, and no or low VOCs. Better, Stronger, Greener.


# DESIGN

## LEVELER SELECTION - LOAD CLASSIFICATION

TOTAL LOAD

LOAD WEIGHT - VEHICLE WEIGHT


5mph


7% Deck Grade

DAILY USAGE

FULL TRUCK (FTL) / CYCLES

FULL TRUCK (FTL)	CYCLES
0-8	0-200
9-16	201-400
17-24	401-600
≥ 24	≥ 600

Full truck = 24-26 pallets

LOAD CLASS

LOAD + USAGE

WORKHORSE

HEAVY

SUPER

load usage

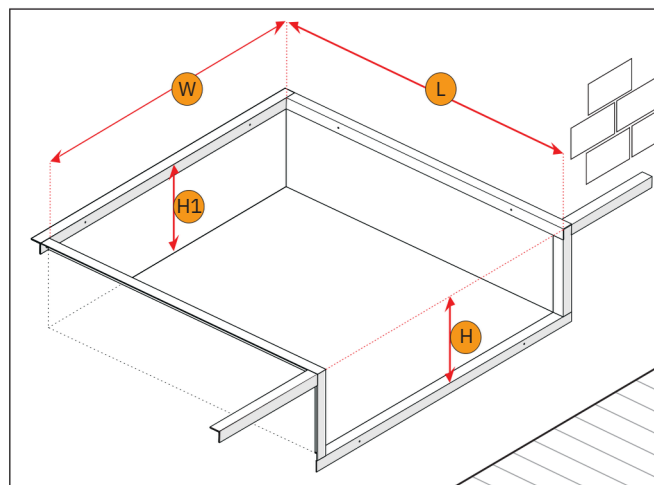
UPTO26,000 LB

For additional capacities, please contact Blue Giant

## PIT DIMENSIONS

NOMINAL SIZE		PIT WIDTH (W)		PIT LENGTH (L)	
		in	mm		inmm
6' x 6'	1829x1829mm	74	1880		63 1600
6' x 8'	1829x2438mm				87 2210
6' x 10'	1829x3048mm				111 2819
6' 6" x 6'	1981x1829mm	80	2032		63 1600
6' 6" x 8'	1981x2438mm				87 2210
6' 6" x 10'	1981x3048mm				111 2819
7' x 6'	2133x1829mm	85	2159		63 1600
7' x 8'	2133x2438mm				87 2210
7' x 10'	2133x3048mm				111 2819

Standard Pit Depth: Front (H): 20" (508mm) Rear (H1): 19.5" (495mm)



Model Number Ordering Format: A - SIZE - CLASS

Sample Order: Air-Powered-6'x6' - Workhorse

Sample Model Number: A6006W

## OPTIONS

- Lip Length 16" (406 mm) Standard
- 18" (457 mm) or 20" (508 mm)
- DLB (Dock Lip Barrier)
- Energy Seal Plus™
- Blue Genius® Touch Control Panel
- Closed Pit Dock Frame
- Grease Fittings on Lip Tube

## FINISH OPTIONS

- Anti-slip powdercoat
- Enriched zinc powder coat
- Special colour options



Complete powder coat system prolongs the life of your dock equipment. This process is proven to be an effective rustproof solution which creates a safer work environment.

AUTHORIZED DEALER